

SolderSmart® MAX

Maximum of flexibility and quality.



Do you want a fully automated soldering process?

Traceability needed?

Would you like to choose the heating technology?

SolderSmart® MAX is your perfect solution for a fully automated soldering process reaching highest quality standards in the market.

ELMOTEC
We solder the future!

📍 ELMOTEC AG
Gewerbstrasse 30
CH-5314 Kleindöttingen

☎ +41 (0)56 245 65 65
✉ info@elmotec.ch
🌐 www.elmotec.ch

High and stable soldering quality without any compromises



WORKING SURFACE
425 x 500mm

AXIS ACCURACY
+/- 0.2mm

SUPPLY VOLTAGE
100 / 230 VAC,
50 / 60 Hz

DIMENSIONS
1150x965x2000mm
(Basic system)

Subject to technical changes

SPEED
~ 400mm/s

WEIGHT
> 350kg *(Basic)*

POWER
< 2kW

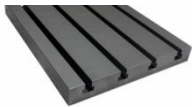
COMPONENT HEIGHT
Max. 200mm
(Drive-over height 340mm)

Advantages

- > **Modularity** to configure your perfect automated soldering solution
- > Computer-based process control and monitoring of all parameters
- > **VisionSystem** with Position correction, Traceability & Solder joint check
- > **Precise Wire feeder** for solder wire diameter (0.5mm, 0.8mm, 1.0mm)
- > Efficient heating technologies for **low energy costs** and **maintenance**

Handling systems

Groove plate



Drawers



Transfer system



Modularity



Soldering systems

Iron soldering






Laser soldering



Inductive soldering



 **Etek Europe Ltd**
Etek Technology Centre, Dow Road,
Prestwick Aerospace Park, Monkton,
Prestwick, KA9 2TU

 +44 (0) 1292 834 000
 sales@etek-europe.com
 www.etek-europe.com