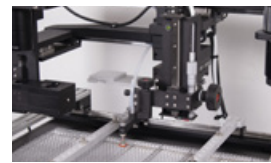
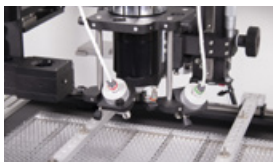


PDR IR-E6

BGA/SMT REWORK STATION FOR XL PCBs

- Gantry Mounted Advanced Focused IR component heating
- Large Quartz IR PCB preheating with 3 zones
- 24"/620mm PCB Capacity
- Split Beam prism system for simultaneous PCB/component viewing
- Precision Components Pick and Placement up to 10um
- Precision PCB handling
- Component Nest/Flux Application Facility
- Closed Loop Non-Contact Temperature Sensing
- Advanced Automatic Thermal Process Control
- Reflow Process Observation Camera
- PCB Forced Air Cooling



▼ Technical Data

Bench Area:	2000mm (w) x 1000mm (d)
Weight:	100kg
Warranty:	2 years
Voltage Frequency:	208-240 volts 50/60Hz, up to 3.5KW
Top Heater Power:	150W Focused Infrared up to Ø70mm Spot
PCB Preheater Power:	3200W Dark IR
PCB Preheater Heating Area Size:	500 x 240mm
Number of PCB Preheater Zones:	3 Zones
Spot Size Included:	F700 (Ø 25-70mm), F200 (Ø10-28mm)
Component Placement:	Split Beam Prism Alignment/x50 Magnification
Placement Accuracy:	Up to 10um
Component Temperature Sensing:	Non-Contact IR Sensor
PCB Temperature Sensing:	Non-Contact IR Sensor
Max PCB Size:	18 x 24"/460 x 620mm
Max Component Size:	55 x 55mm
Min Component Size:	01005
Number of TC Channels:	4
Operating Software:	PDR's Thermoactive Software Suite suitable for Windows 10+

▼ Applications

Desoldering, placement and soldering of all types of surface-mounted devices (SMD) BGA, QFN, LED, CSP, 0201, 01005

▼ Accessories

PDR Lens Attachments

AC-F150	F150 (Ø4 - 18mm spot size)
AC-F400	F400 (Ø12 - 35mm spot size)

PDR Micro Component Kit

UGMC01	PDR Micro Component Kit (F150 lens attachment, low profile pickup head, SP03031:SP03030:SP03049 pick-up tips)
UGMC02	PDR Micro Component Camera Kit (120x Zoom lens, Plate and Camera)

Spare Kits

AC02009	Consumables kit (lamp+socket, gel flux, roll 25mm black tape, vac cup,
AC02008	Consumables kit (lamp+socket, gel flux x 2, roll 25mm black tape, vac cup, springs, O rings, Lens No1, Cold Mirror)

Solderpaste Print Part System

PDRPP01	Print Part System
PDRPP02	Print Part System Additional Stencil

PDR Reball Kit

PDRRB01	PDR BGA Reball Set (BGA foil & frame, paste foil & frame, hi-temp esd nest, squeegee blade)
---------	---

Other

SP05029	Laser Alignment Tool
SC020	Controller & Sensor Calibration Check Kit
UGBHHP	Hotplate - 270mm x 125mm - 700w - 208/240V ac
UGBHHP2	Hotplate - 150mm x 125mm - 350w - 208/240V ac
SP05017	PCB Sensor Contact Probe