



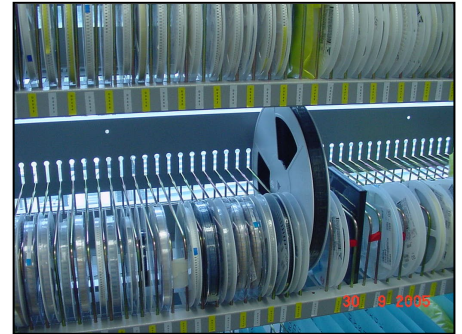
# Mossman Tebbs Ltd <sup>®</sup>

Mossman Tebbs Ltd design, manufacture and supply the “Mossman Tebbs” branded peripheral trolleys and racks for the printed circuit board production line.

PCB Trolleys



Kitting Trolleys



Component Storage Racks



S M Tape Splicing Station



Solder Fixture Trolleys

## Feeder Storage

Fuji  
Panasonic  
Sanyo  
Philips  
Mycronic (Mydata)  
GSM  
Juki  
Siplace (Siemens)



## Manufactured by:

Mossman Tebbs Ltd  
20 Bentley Court  
Paterson Road  
Wellingborough  
Northants  
NN8 4BQ

Tele: +44 (0) 1933 448 000  
[www.mossmantebbs.co.uk](http://www.mossmantebbs.co.uk)  
Email: [sales@mossmantebbs.co.uk](mailto:sales@mossmantebbs.co.uk)

Designed & Manufactured in Britain



## Designed by:

Peter Mossman



## Table Of Contents

*NEW* Flat Pack ESD Rack .....	4
Kitting Trolley - 851M .....	5
Mini Kitting Trolley - 851-450.....	6
Adaptable Reel Rack - 824-320 .....	7
Fuji CP6 Feeder Storage Shelf - 824-280 .....	8
Fuji NXT Feeder Storage Shelf - 901-500 .....	9
Juki ETF Feeder Storage Shelf - 926-81 .....	10
Juki 2000 Feeder Storage Shelf - 926-70.....	11
Mycronic (Mydata Agilis) Feeder & Reel Rack - 943-120 .....	12
Panasonic Feeder Storage Shelf - 999-001 .....	13
Philips GEM Feeder Storage Shelf - 909-160.....	14
Philips GEM Feeder Storage Shelf - 909-170.....	15



## Table Of Contents

Samsung Feeder Storage Shelf - 995-001 .....	16
Siplace (Siemens) Feeder Storage Shelf - 915-200 .....	17
Siplace (Siemens) Reel Rack - 824-330 .....	18
Siplace (Siemens) 'X' Feeder Storage Shelf - 915-350 & 915-370.....	19
Mobile Feeder Loading Station - 940-150.....	20
PCB 50 Trolley - 920-50 .....	21
PCB 100 Trolley - 920-100 .....	22
Free Standing Component Rack System - 769-01 .....	23
Panasonic Floor Standing Reel Holder - 999-100 .....	24
Mobile Component Rack System - 825-01.....	25
Adaptable Reel Rack - 769-320 .....	26
Double Sided Mobile Rack System - 825-20.....	27
Adaptable Reel Rack - 769-321 .....	28
*NEW* Lineside Compact Double Sided Mobile Reel Rack - 825-60 .....	29
29" Screen Rack - 862-120 .....	30
S M Tape Splicing Trolley - 1000-001.....	31



# Mossman Tebbs<sup>®</sup> Ltd

## *New Product Launch*

### Flat Pack ESD Rack



We're excited to introduce the new ESD Rack from Mossman Tebbs.

Footprint: 2970(W) x 500(D) x 1500(H)mm  
Bays as shown above: 1470(W) x 500(D) x 910 (H)mm  
Adjustable Shelves to suit tote boxes and other sensitive equipment

**Manufactured by:**  
Mossman Tebbs Ltd  
20 Bentley Court  
Paterson Road  
Wellingborough  
Northants  
NN8 4BQ

Tele: +44 (0) 1933 448 000  
[www.mossmantebbs.co.uk](http://www.mossmantebbs.co.uk)  
Email: [sales@mossmantebbs.co.uk](mailto:sales@mossmantebbs.co.uk)

**Designed by:**  
Peter Mossman

**Call Mossman Tebbs on +44 (0)1933 448 000**

Designed & Manufactured in Britain





# Mossman Tebbs<sup>®</sup> Ltd

20 Bentley Court  
Paterson Road  
Finedon Road Industrial Estate  
Wellingborough  
Northants NN8 4BQ

## Kitting Trolley - 851M



*Shelves not included. See separate information sheet for shelf types and details.*

Manufactured from high quality materials.

Full ESD compatibility.

Will accept various types of feeder shelf and component reel racks.

Footprint: 970x760x1745mm.

Code No. 851M.

Fully fabricated to give maximum rigidity.

Shelves easily hook onto unit at 50mm centres for maximum flexibility.

Manufactured to prevent the shelves being attached on rear of unit.

Mounted on high quality A/S castors.

---

Manufactured by:

Mossman Tebbs Ltd  
20 Bentley Court  
Paterson Road  
Wellingborough  
Northants  
NN8 4BQ

Tele: +44 (0) 1933 448 000  
[www.mossmantebbs.co.uk](http://www.mossmantebbs.co.uk)  
Email: [sales@mossmantebbs.co.uk](mailto:sales@mossmantebbs.co.uk)

Designed by:  
Peter Mossman

---

**Correct feeder & component storage will increase efficiency and reduce downtime.**

**Call Mossman Tebbs on +44 (0)1933 448 000**

Designed & Manufactured in Britain





# Mossman Tebbs<sup>®</sup> Ltd

20 Bentley Court  
Paterson Road  
Finedon Road Industrial Estate  
Wellingborough  
Northants NN8 4BQ

## Mini Kitting Trolley - 851-450



Code No. 851-450.

Fully fabricated to give maximum rigidity.

Shelves easily hook onto unit at 50mm centres for maximum flexibility.

Ideal for mimicking machine setups.

Mounted on high quality A/S castors.

*Shelves not included. See separate information sheet for shelf types and details.*

Manufactured from high quality materials.

Full ESD compatibility.

Will accept various types of feeder shelf and component reel racks.

Footprint: 970x760x1070mm.

---

**Manufactured by:**

Mossman Tebbs Ltd  
20 Bentley Court  
Paterson Road  
Wellingborough  
Northants  
NN8 4BQ

Tele: +44 (0) 1933 448 000  
[www.mossmantebbs.co.uk](http://www.mossmantebbs.co.uk)  
Email: [sales@mossmantebbs.co.uk](mailto:sales@mossmantebbs.co.uk)

**Designed by:**  
Peter Mossman

---

**Correct feeder & component storage will increase efficiency and reduce downtime.**

**Call Mossman Tebbs on +44 (0)1933 448 000**

Designed & Manufactured in Britain





# Mossman Tebbs<sup>®</sup> Ltd

20 Bentley Court  
Paterson Road  
Finedon Road Industrial Estate  
Wellingborough  
Northants NN8 4BQ

## Adaptable Reel Rack - 824-320

Code No. 824-320.

Capacity: Reel sizes of 2 x 7" & 13".

Moveable Divider Rods: 44 positions on a 16mm pitch.

Fully adaptable to suit various sizes of reels.

Supplied with 20 Divider Rods.



Manufactured from high quality materials.

Full ESD compatibility.

Designed to fit the following Trolleys:  
851M Kitting Trolley; 851-07 Double Sided Kitting Trolley; 851-450 Mini Kitting Trolley.

Manufactured by:

Mossman Tebbs Ltd  
20 Bentley Court  
Paterson Road  
Wellingborough  
Northants  
NN8 4BQ

Tele: +44 (0) 1933 448 000  
[www.mossmantebbs.co.uk](http://www.mossmantebbs.co.uk)  
Email: [sales@mossmantebbs.co.uk](mailto:sales@mossmantebbs.co.uk)

Designed by:

Peter Mossman

**Correct pcb & component storage will increase efficiency and reduce downtime.**

**Call Mossman Tebbs on +44 (0)1933 448 000**

Designed & Manufactured in Britain





# Mossman Tebbs<sup>®</sup> Ltd

20 Bentley Court  
Paterson Road  
Finedon Road Industrial Estate  
Wellingborough  
Northants NN8 4BQ

## Fuji CP6 Feeder Storage Shelf - 824-280

Code No. 824-280

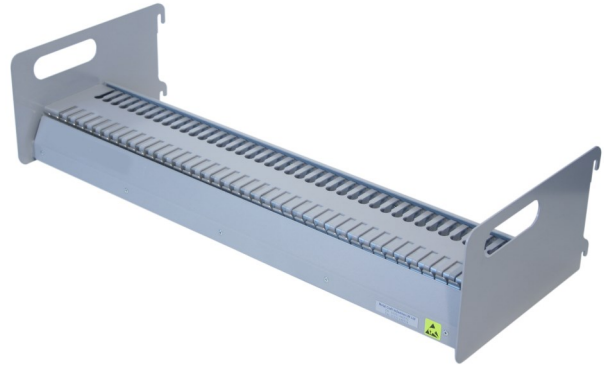
Capacity: 40 Locations on 20mm centres.

Designed to fit the following Kitting Trolleys:

851M Kitting Trolley

851-07 Double Sided Kitting Trolley

851-450 Mini Kitting Trolley.



Manufactured from high quality materials.

Mimic machine set ups.

Clear visual check on inventory.

Full ESD compatibility.

Increased protection for your valuable Feeders.

---

Manufactured by:

Mossman Tebbs Ltd

20 Bentley Court

Paterson Road

Wellingborough

Northants

NN8 4BQ

Tele: +44 (0) 1933 448 000

[www.mossmantebbs.co.uk](http://www.mossmantebbs.co.uk)

Email: [sales@mossmantebbs.co.uk](mailto:sales@mossmantebbs.co.uk)

Designed by:

Peter Mossman

---

**Correct feeder storage will increase efficiency and reduce downtime.**

**Call Mossman Tebbs on +44 (0)1933 448 000**

Designed & Manufactured in Britain







# Mossman Tebbs<sup>®</sup> Ltd

20 Bentley Court  
Paterson Road  
Finedon Road Industrial Estate  
Wellingborough  
Northants NN8 4BQ

## Fuji NXT Feeder Storage Shelf - 901-500

Code No. 901-500

Capacity: 40 Locations on 20mm centres.

Designed to fit the following Kitting Trolleys:

- 851M Kitting Trolley.
- 851-07 Double Sided Kitting Trolley.
- 851-450 Mini Kitting Trolley.



Manufactured from high quality materials.

Mimic machine set ups.

Clear visual check on inventory.

Full ESD compatibility.

Increased protection for your valuable Feeders.

Manufactured by:  
Mossman Tebbs Ltd  
20 Bentley Court  
Paterson Road  
Wellingborough  
Northants  
NN8 4BQ

Tele: +44 (0) 1933 448 000  
[www.mossmantebbs.co.uk](http://www.mossmantebbs.co.uk)  
Email: [sales@mossmantebbs.co.uk](mailto:sales@mossmantebbs.co.uk)

Designed by:  
Peter Mossman

**Correct pcb & component storage will increase efficiency and reduce downtime.**

**Call Mossman Tebbs on +44 (0)1933 448 000**

Designed & Manufactured in Britain





# Mossman Tebbs<sup>®</sup> Ltd

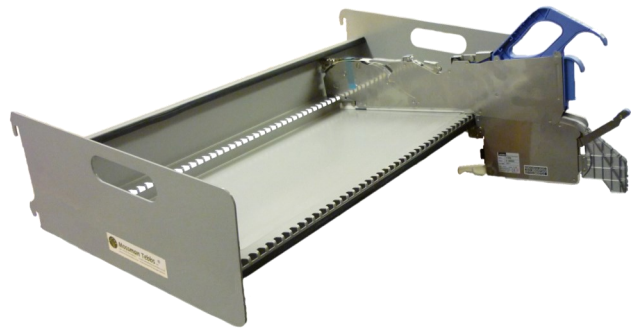
20 Bentley Court  
Paterson Road  
Finedon Road Industrial Estate  
Wellingborough  
Northants NN8 4BQ

## Juki ETF Feeder Storage Shelf - 926-81

Code No. 926-81

Capacity: 49 Locations on 17.0mm centres. Will take 49 off 8mm Feeders.

Designed to fit the following Kitting Trolleys:  
851M Kitting Trolley.  
851-07 Double Sided Kitting Trolley.  
851-450 Mini Kitting Trolley.



Manufactured from high quality materials.

Mimic machine set ups.

Clear visual check on inventory.

Full ESD compatibility.

Increased protection for your valuable Feeders.

---

Manufactured by:  
Mossman Tebbs Ltd  
20 Bentley Court  
Paterson Road  
Wellingborough  
Northants  
NN8 4BQ

Tele: +44 (0) 1933 448 000  
[www.mossmantebbs.co.uk](http://www.mossmantebbs.co.uk)  
Email: [sales@mossmantebbs.co.uk](mailto:sales@mossmantebbs.co.uk)

Designed by:  
Peter Mossman

---

Correct pcb & component storage will increase efficiency and reduce downtime.

Call Mossman Tebbs on +44 (0)1933 448 000

Designed & Manufactured in Britain





# Mossman Tebbs<sup>®</sup> Ltd

20 Bentley Court  
Paterson Road  
Finedon Road Industrial Estate  
Wellingborough  
Northants NN8 4BQ

## Juki 2000 Feeder Storage Shelf - 926-70

Code No. 926-70

Capacity: 99 Locations on 8.5mm centres. Will take 50 off 8mm Feeders.

Designed to fit the following Kitting Trolleys:

851M Kitting Trolley.

851-07 Double Sided Kitting Trolley.

851-450 Mini Kitting Trolley.

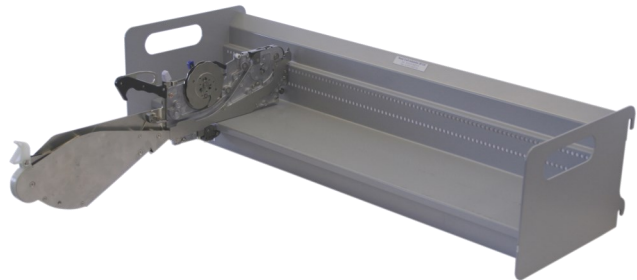
Manufactured from high quality materials.

Mimic machine set ups.

Clear visual check on inventory.

Full ESD compatibility.

Increased protection for your valuable Feeders.



---

Manufactured by:

Mossman Tebbs Ltd  
20 Bentley Court  
Paterson Road  
Wellingborough  
Northants  
NN8 4BQ

Tele: +44 (0) 1933 448 000  
[www.mossmantebbs.co.uk](http://www.mossmantebbs.co.uk)  
Email: [sales@mossmantebbs.co.uk](mailto:sales@mossmantebbs.co.uk)

Designed by:

Peter Mossman

---

**Correct pcb & component storage will increase efficiency and reduce downtime.**

**Call Mossman Tebbs on +44 (0)1933 448 000**

Designed & Manufactured in Britain





# Mossman Tebbs<sup>®</sup> Ltd

20 Bentley Court  
Paterson Road  
Finedon Road Industrial Estate  
Wellingborough  
Northants NN8 4BQ

## Mycronic (Mydata Agilis) Feeder & Reel Rack - 943-120

Code No. 943-120.

Rack Capacity: 32 locations on 25mm pitch. Will accept 4.7 & 8.5 Feeders.

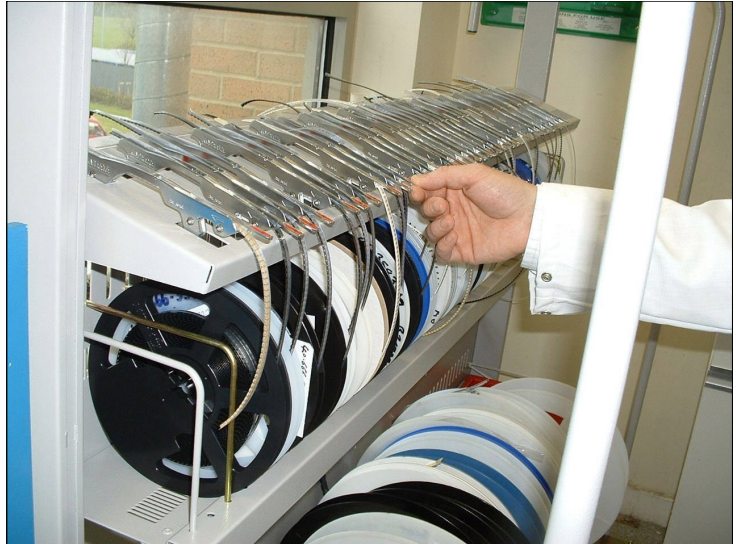
Reel Rack Capacity: 32 locations for 7" Reels with moveable divider rods.

Designed to fit the following:  
851M Kitting Trolley.  
851-07 Double Sided Kitting Trolley.  
851-450 Mini Kitting Trolley.

Manufactured from high quality materials.

Full ESD compatibility.

Ability to store the component reels already threaded to the correct feeders. Clear visual check on inventory.



---

Manufactured by:  
Mossman Tebbs Ltd  
20 Bentley Court  
Paterson Road  
Wellingborough  
Northants  
NN8 4BQ

Tele: +44 (0) 1933 448 000  
[www.mossmantebbs.co.uk](http://www.mossmantebbs.co.uk)  
Email: [sales@mossmantebbs.co.uk](mailto:sales@mossmantebbs.co.uk)

Designed by:  
Peter Mossman

---

**Correct feeder storage will increase efficiency and reduce downtime.**

**Call Mossman Tebbs on +44 (0)1933 448 000**

Designed & Manufactured in Britain





# Mossman Tebbs<sup>®</sup> Ltd

20 Bentley Court  
Paterson Road  
Finendon Road Industrial Estate  
Wellingborough  
Northants NN8 4BQ

## Panasonic Feeder Storage Shelf - 999-001



*Illustration shows feeder shelves used in the 851M Kitting Trolley*

Manufactured from high quality materials.

Mimic machine set ups.

Clear visual check on inventory.

Full ESD compatibility.

Increased protection for your valuable Feeders.

Code No. 999-001

Capacity: Will take 35 off 8mm Feeders.

Designed to fit the following Kitting Trolleys:

851M Kitting Trolley.

851-07 Double Sided Kitting Trolley.

851-450 Mini Kitting Trolley.

---

Manufactured by:

Mossman Tebbs Ltd  
20 Bentley Court  
Paterson Road  
Wellingborough  
Northants  
NN8 4BQ

Tele: +44 (0) 1933 448 000

[www.mossmantebbs.co.uk](http://www.mossmantebbs.co.uk)

Email: [sales@mossmantebbs.co.uk](mailto:sales@mossmantebbs.co.uk)

Designed by:

Peter Mossman

---

**Correct pcb & component storage will increase efficiency and reduce downtime.**

**Call Mossman Tebbs on +44 (0)1933 448 000**

Designed & Manufactured in Britain





# Mossman Tebbs<sup>®</sup> Ltd

20 Bentley Court  
Paterson Road  
Finendon Road Industrial Estate  
Wellingborough  
Northants NN8 4BQ

## Philips GEM Feeder Storage Shelf - 909-160

Code No. 909-160

Capacity: 50 Locations on 20mm centres.

Designed to fit the 909-01 Kitting Trolley with a width of 1100mm.

Maximum of three shelves per trolley.

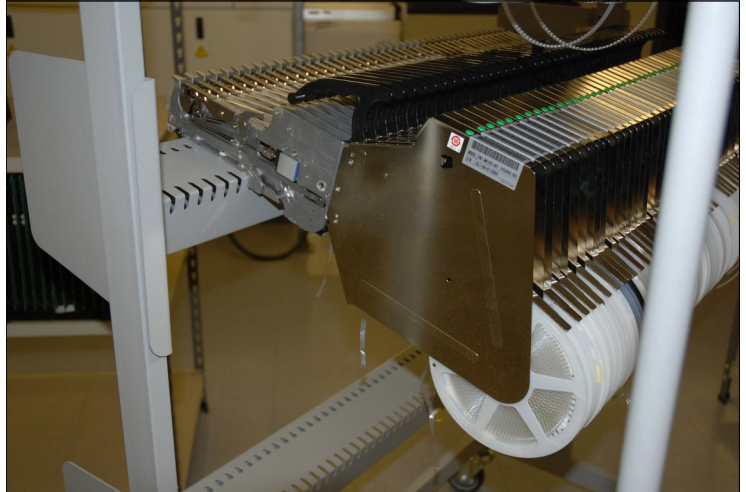
Manufactured from high quality materials.

Mimic machine set ups.

Clear visual check on inventory.

Full ESD compatibility.

Increased protection for your valuable Feeders.



---

### Manufactured by:

Mossman Tebbs Ltd  
20 Bentley Court  
Paterson Road  
Wellingborough  
Northants  
NN8 4BQ

Tele: +44 (0) 1933 448 000  
[www.mossmantebbs.co.uk](http://www.mossmantebbs.co.uk)  
Email: [sales@mossmantebbs.co.uk](mailto:sales@mossmantebbs.co.uk)

### Designed by:

Peter Mossman

---

**Correct feeder storage will increase efficiency and reduce downtime.**

**Call Mossman Tebbs on +44 (0)1933 448 000**

Designed & Manufactured in Britain





# Mossman Tebbs<sup>®</sup> Ltd

20 Bentley Court  
Paterson Road  
Finedon Road Industrial Estate  
Wellingborough  
Northants NN8 4BQ

## Philips GEM Feeder Storage Shelf - 909-170

Code No. 909-170

Capacity: 40 Locations on 20mm centres.

Designed to fit the 851M Kitting Trolley with a width of 825mm.

Maximum of three shelves per trolley.

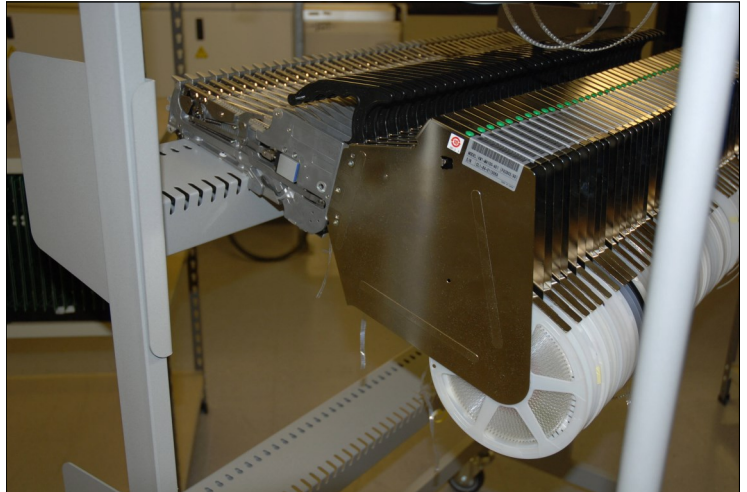
Manufactured from high quality materials.

Mimic machine set ups.

Clear visual check on inventory.

Full ESD compatibility.

Increased protection for your valuable Feeders.



---

### Manufactured by:

Mossman Tebbs Ltd  
20 Bentley Court  
Paterson Road  
Wellingborough  
Northants  
NN8 4BQ

Tele: +44 (0) 1933 448 000  
[www.mossmantebbs.co.uk](http://www.mossmantebbs.co.uk)  
Email: [sales@mossmantebbs.co.uk](mailto:sales@mossmantebbs.co.uk)

### Designed by:

Peter Mossman

---

**Correct feeder storage will increase efficiency and reduce downtime.**

**Call Mossman Tebbs on +44 (0)1933 448 000**

Designed & Manufactured in Britain





# Mossman Tebbs <sup>®</sup> Ltd

20 Bentley Court  
Paterson Road  
Finedon Road Industrial Estate  
Wellingborough  
Northants NN8 4BQ

## Samsung Feeder Storage Shelf - 995-001

Code No. 995-001

Capacity: 51 Locations on 15mm centres.

Designed to fit the following Kitting Trolleys: 851M Kitting Trolley; 851-07 Double Sided Kitting Trolley; 851-450 Mini Kitting Trolley.

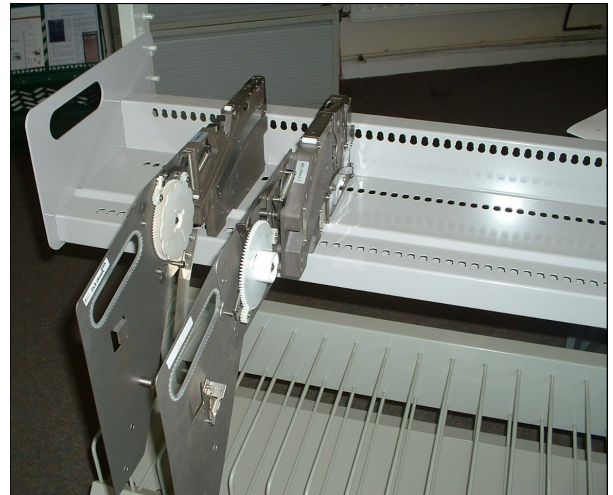
Manufactured from high quality materials.

Mimic machine set ups.

Clear visual check on inventory.

Full ESD compatibility.

Increased protection for your valuable Feeders.



Manufactured by:

Mossman Tebbs Ltd  
20 Bentley Court  
Paterson Road  
Wellingborough  
Northants  
NN8 4BQ

Tele: +44 (0) 1933 448 000  
[www.mossmantebbs.co.uk](http://www.mossmantebbs.co.uk)  
Email: [sales@mossmantebbs.co.uk](mailto:sales@mossmantebbs.co.uk)

Designed by:

Peter Mossman

**Correct feeder storage will increase efficiency and reduce downtime.**

**Call Mossman Tebbs on +44 (0)1933 448 000**

Designed & Manufactured in Britain







# Mossman Tebbs<sup>®</sup> Ltd

20 Bentley Court  
Paterson Road  
Finedon Road Industrial Estate  
Wellingborough  
Northants NN8 4BQ

## Siplace (Siemens) Feeder Storage Shelf - 915-200

Code No. 915-200

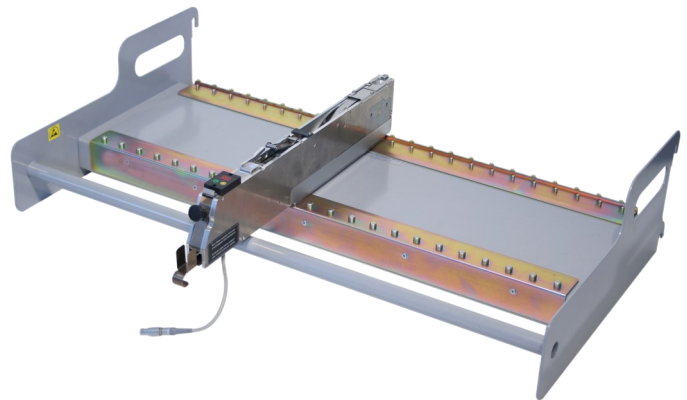
Capacity: 23 Locations on 35mm centres.

Designed to fit the following Kitting Trolleys:

851M Kitting Trolley.

851-07 Double Sided Kitting Trolley.

851-450 Mini Kitting Trolley.



Companion Reel Rack 824-330 available.

Manufactured from high quality materials.

Mimic machine set ups.

Clear visual check on inventory.

Full ESD compatibility.

Increased protection for your valuable Feeders.

---

Manufactured by:

Mossman Tebbs Ltd  
20 Bentley Court  
Paterson Road  
Wellingborough  
Northants  
NN8 4BQ

Tele: +44 (0) 1933 448 000  
[www.mossmantebbs.co.uk](http://www.mossmantebbs.co.uk)  
Email: [sales@mossmantebbs.co.uk](mailto:sales@mossmantebbs.co.uk)

Designed by:

Peter Mossman

---

**Correct feeder storage will increase efficiency and reduce downtime.**

**Call Mossman Tebbs on +44 (0)1933 448 000**

Designed & Manufactured in Britain





# Mossman Tebbs<sup>®</sup> Ltd

20 Bentley Court  
Paterson Road  
Finedon Road Industrial Estate  
Wellingborough  
Northants NN8 4BQ

## Siplace (Siemens) Reel Rack - 824-330

Code No. 824-330.

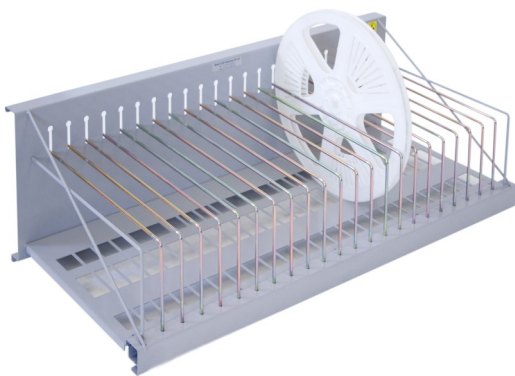
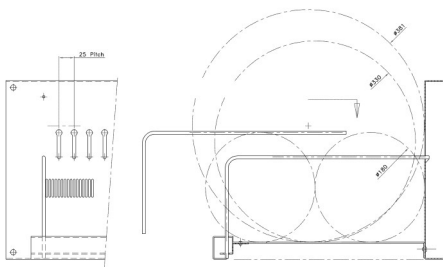
Reel Rack accompanies Siplace (Siemens) Feeder Shelf 915-200.

Capacity: Reel sizes of 2 x 7", 13" & 15".

Moveable Divider Rods: 23 positions on a 35mm pitch.

Fully adaptable to suit various sizes of reels.

Supplied with 22 Divider Rods.



Manufactured from high quality materials.

Full ESD compatibility.

Designed to fit the following Trolleys:  
851M Kitting Trolley.  
851-07 Double Sided Kitting Trolley.  
851-450 Mini Kitting Trolley.

---

Manufactured by:  
Mossman Tebbs Ltd  
20 Bentley Court  
Paterson Road  
Wellingborough  
Northants  
NN8 4BQ

Tele: +44 (0) 1933 448 000  
[www.mossmantebbs.co.uk](http://www.mossmantebbs.co.uk)  
Email: [sales@mossmantebbs.co.uk](mailto:sales@mossmantebbs.co.uk)

Designed by:  
Peter Mossman

---

**Correct pcb & component storage will increase efficiency and reduce downtime.**

**Call Mossman Tebbs on +44 (0)1933 448 000**

Designed & Manufactured in Britain





# Mossman Tebbs<sup>®</sup> Ltd

20 Bentley Court  
Paterson Road  
Finedon Road Industrial Estate  
Wellingborough  
Northants NN8 4BQ

## Siplace (Siemens) 'X' Feeder Storage Shelf - 915-350 & 915-370

**Code No. 915-350:** Available with 70 locations. Utilising the full width of the shelf for storage.

**Code No. 915-370:** Available with 40 locations. Shelf mimics machine and would be used for kitting purposes.

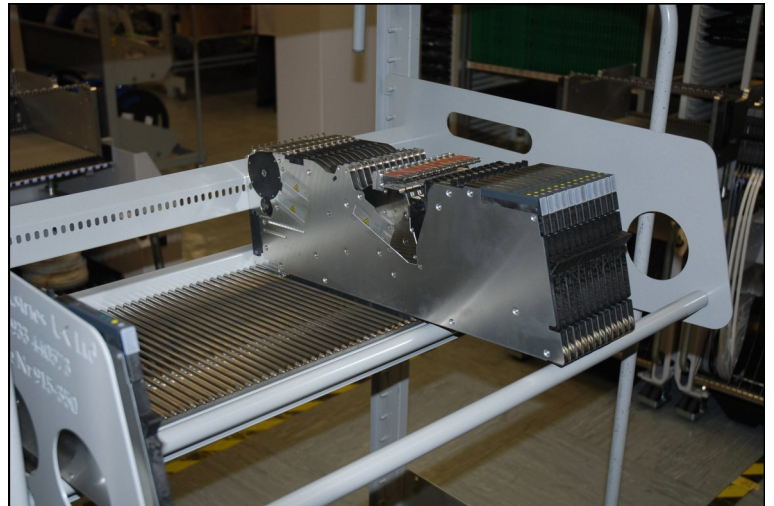
Designed to fit the following Kitting Trolleys:  
851M Kitting Trolley.  
851-07 Double Sided Kitting Trolley.  
851-450 Mini Kitting Trolley.

Manufactured from high quality materials.

Full ESD compatibility.

Inclined to prevent feeders from detaching.

Feeders sit inside shelf framework to ensure protection from damage.



---

**Manufactured by:**  
Mossman Tebbs Ltd  
20 Bentley Court  
Paterson Road  
Wellingborough  
Northants  
NN8 4BQ

Tele: +44 (0) 1933 448 000  
[www.mossmantebbs.co.uk](http://www.mossmantebbs.co.uk)  
Email: [sales@mossmantebbs.co.uk](mailto:sales@mossmantebbs.co.uk)

**Designed by:**  
Peter Mossman

---

**Correct feeder storage will increase efficiency and reduce downtime.**

**Call Mossman Tebbs on +44 (0)1933 448 000**

Designed & Manufactured in Britain





# Mossman Tebbs<sup>®</sup> Ltd

20 Bentley Court  
Paterson Road  
Finedon Road Industrial Estate  
Wellingborough  
Northants NN8 4BQ

## Mobile Feeder Loading Station - 940-150



Code No. 940-150.

Easily adjustable working height from 825 to 1070mm.

Easy to manoeuvre. Mounted on two high quality A/S wheels.

Easily fitted loading platforms to suit the following feeders:

Juki 926-90.  
Fuji NXT 901-510.  
Samsung 995-010.

*The illustration shows a 940-150 Loading Station fitted with a 926-90 Juki Loading Platform.*



---

Manufactured by:  
20 Bentley Court  
Paterson Road  
Wellingborough  
Northants  
NN8 4BQ

Tele: +44 (0) 1933 448 000  
[www.mossmantebbs.co.uk](http://www.mossmantebbs.co.uk)  
Email: [sales@mossmantebbs.co.uk](mailto:sales@mossmantebbs.co.uk)

Manufactured from high quality materials.

Full ESD compatibility.

Footprint: 790mm x 540mm x 1260mm

---

Designed by:  
Peter Mossman

**Correct loading of feeders will increase efficiency and reduce d  
both downtime & component loss.**

**Call Mossman Tebbs on +44 (0)1933 448 000**

Designed & Manufactured in Britain





# Mossman Tebbs <sup>®</sup> Ltd

20 Bentley Court  
Paterson Road  
Finedon Road Industrial Estate  
Wellingborough  
Northants NN8 4BQ

## PCB 50 Trolley - 920-50



Code No. 920-50.

Capacity of up to 50 PCB's.

Standard configuration of one panel. Further panels as optional extra.

Full ESD compatibility.

Mounted on high quality A/S castors.

---

### Manufactured by:

Mossman Tebbs Ltd  
20 Bentley Court  
Paterson Road  
Wellingborough  
Northants  
NN8 4BQ

Tele: +44 (0) 1933 448 000

[www.mossmantebbs.co.uk](http://www.mossmantebbs.co.uk)

Email: [sales@mossmantebbs.co.uk](mailto:sales@mossmantebbs.co.uk)

Manufactured from high quality materials.

Infinite adjustment on all four corners by means of thumbnuts.

Footprint: 630x560x1490mm.

---

### Designed by:

Peter Mossman

---

**Correct pcb & component storage will increase efficiency and reduce downtime.**

**Call Mossman Tebbs on +44 (0)1933 448 000**

Designed & Manufactured in Britain





# Mossman Tebbs<sup>®</sup> Ltd

20 Bentley Court  
Paterson Road  
Finedon Road Industrial Estate  
Wellingborough  
Northants NN8 4BQ

## PCB 100 Trolley - 920-100



Code No. 920-100.

Capacity of up to 100 PCB's.  
(Subject to PCB dimensions)

Standard configuration of one double panel.  
Further panels as optional extra.

Full ESD compatibility.

Mounted on high quality A/S castors.

---

Manufactured by:  
Mossman Tebbs Ltd  
20 Bentley Court  
Paterson Road  
Wellingborough  
Northants  
NN8 4BQ

Tele:+44 (0) 1933 448 000  
[www.mossmantebbs.co.uk](http://www.mossmantebbs.co.uk)  
Email: [sales@mossmantebbs.co.uk](mailto:sales@mossmantebbs.co.uk)

Designed by:  
Peter Mossman

Manufactured from high quality materials.

Infinite adjustment on all four corners by means of thumbnuts.

Footprint: 1225x560x1490mm.

---

**Correct pcb & component storage will increase efficiency and reduce downtime.**

**Call Mossman Tebbs on +44 (0)1933 448 000**

Designed & Manufactured in Britain





# Mossman Tebbs<sup>®</sup> Ltd

20 Bentley Court  
Paterson Road  
Finedon Road Industrial Estate  
Wellingborough  
Northants NN8 4BQ

## Free Standing Component Rack System - 769-01



Code No. 769-01

Support posts designed to take the following choice of racks: 769-07.26.50 7" Reel Rack; 769-43.26.50 2x7" Reel Rack; 769-320 Adaptable Reel Rack.

Mounted on high quality A/S Articulating Adjustable Feet.

---

Manufactured by:

Mossman Tebbs Ltd  
20 Bentley Court  
Paterson Road  
Wellingborough  
Northants  
NN8 4BQ

The illustration shows a 769-01 with seven 2x7" Reel Rack 769-43.26.50.

Manufactured from high quality materials.

Full ESD compatibility.

Clear visual check on inventory.

Footprint: 1530mm x 710mm

Tele: +44 (0) 1933 448 000  
[www.mossmantebbs.co.uk](http://www.mossmantebbs.co.uk)  
Email: [sales@mossmantebbs.co.uk](mailto:sales@mossmantebbs.co.uk)

Designed by:

Peter Mossman

---

**Correct pcb & component storage will increase efficiency and reduce downtime.**

**Call Mossman Tebbs on +44 (0)1933 448 000**

Designed & Manufactured in Britain





# Mossman Tebbs<sup>®</sup> Ltd

20 Bentley Court  
Paterson Road  
Finendon Road Industrial Estate  
Wellingborough  
Northants NN8 4BQ

## Panasonic Floor Standing Reel Holder - 999-100

Code No. 999-100

Capacity: 35 off 13/15" Reels  
70 off 7" Reels

Fully flexible with removable dividers.

Easy to use.

The unit has been designed to take both sizes of reels dependant upon machine set up and component sizes.

Full ESD compatibility.

Manufactured from high quality materials.



*Illustration shows how two 7" reels can be used in tandem.*



Manufactured by:

Mossman Tebbs Ltd  
20 Bentley Court  
Paterson Road  
Wellingborough  
Northants  
NN8 4BQ

Tele: +44 (0) 1933 448 000  
[www.mossmantebbs.co.uk](http://www.mossmantebbs.co.uk)  
Email: [sales@mossmantebbs.co.uk](mailto:sales@mossmantebbs.co.uk)

Designed by:

Peter Mossman

**Correct pcb & component storage will increase efficiency and reduce downtime.**

**Call Mossman Tebbs on +44 (0)1933 448 000**

Designed & Manufactured in Britain







# Mossman Tebbs<sup>®</sup> Ltd

20 Bentley Court  
Paterson Road  
Finedon Road Industrial Estate  
Wellingborough  
Northants NN8 4BQ

## Mobile Component Rack System - 825-01



Code No. 825-01.

Support posts designed to take the following:  
769-320 Adaptable Reel Rack; 769-07.26.50 7”  
Reel Rack; 769-43.26.50 2x7” Reel Rack.

Mounted on high quality A/S castors.

Fitted with lower shelf.

---

### Manufactured by:

Mossman Tebbs Ltd  
20 Bentley Court  
Paterson Road  
Wellingborough  
Northants  
NN8 4BQ

Tele: +44 (0) 1933 448 000  
[www.mossmantebbs.co.uk](http://www.mossmantebbs.co.uk)  
Email: [sales@mossmantebbs.co.uk](mailto:sales@mossmantebbs.co.uk)

### Designed by:

Peter Mossman

*The illustration shows an 825-01 with five Adaptable Reel Racks.*

Manufactured from high quality materials.

Full ESD compatibility.

Clear visual check on inventory.

Footprint: 1570mm x 712mm

**Correct pcb & component storage will increase efficiency and reduce downtime.**

**Call Mossman Tebbs on +44 (0)1933 448 000**

Designed & Manufactured in Britain

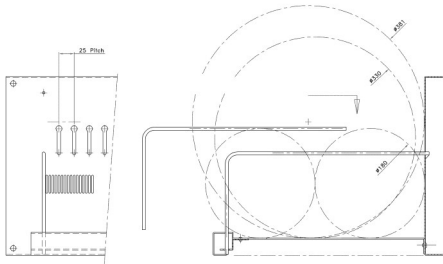




# Mossman Tebbs<sup>®</sup> Ltd

20 Bentley Court  
Paterson Road  
Finedon Road Industrial Estate  
Wellingborough  
Northants NN8 4BQ

## Adaptable Reel Rack - 769-320



Code No. 769-320.

Capacity: Reel sizes of 2 x 7", 13" & 15".

Moveable Divider Rods: 56 positions on a 25mm pitch.

Fully adaptable to suit various sizes of reels.

Supplied with 30 Divider Rods.



Manufactured from high quality materials.

Full ESD compatibility.

Designed to fit the following Trolleys:  
Mobile Component Rack System 825-01

---

Manufactured by:

Mossman Tebbs Ltd  
20 Bentley Court  
Paterson Road  
Wellingborough  
Northants  
NN8 4BQ

Tele: +44 (0) 1933 448 000  
[www.mossmantebbs.co.uk](http://www.mossmantebbs.co.uk)  
Email: [sales@mossmantebbs.co.uk](mailto:sales@mossmantebbs.co.uk)

Designed by:

Peter Mossman

---

Correct pcb & component storage will increase efficiency and reduce downtime.

Call Mossman Tebbs on +44 (0)1933 448 000

Designed & Manufactured in Britain





# Mossman Tebbs<sup>®</sup> Ltd

20 Bentley Court  
Paterson Road  
Finedon Road Industrial Estate  
Wellingborough  
Northants NN8 4BQ

## Double Sided Mobile Rack System - 825-20



Code No. 825-20.

Support posts designed to take the 769-321  
Adaptable Reel Rack

Mounted on high quality A/S castors.

---

**Manufactured by:**

Mossman Tebbs Ltd  
20 Bentley Court  
Paterson Road  
Wellingborough  
Northants  
NN8 4BQ

Tele: +44 (0) 1933 440573  
[www.mossmantebbs.co.uk](http://www.mossmantebbs.co.uk)  
Email: [sales@mossmantebbs.co.uk](mailto:sales@mossmantebbs.co.uk)

**Designed by:**

Peter Mossman

---

*The illustration shows an 825-20 with 8 off  
Adaptable Reel Racks.*

Manufactured from high quality  
materials.

Full ESD compatibility.

Clear visual check on inventory.

Footprint: 1650mm x 1010mm

**Correct pcb & component storage will increase efficiency and  
reduce downtime.**

**Call Mossman Tebbs on +44 (0)1933 440573**

Designed & Manufactured in Britain

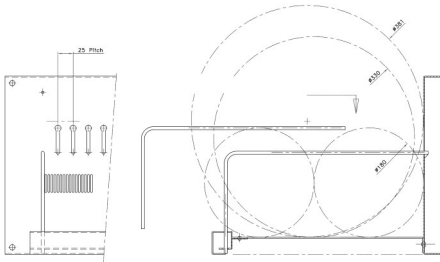




# Mossman Tebbs<sup>®</sup> Ltd

20 Bentley Court  
Paterson Road  
Finedon Road Industrial Estate  
Wellingborough  
Northants NN8 4BQ

## Adaptable Reel Rack - 769-321



Code No. 769-321.

Capacity: Reel sizes of 2 x 7", 13" & 15".

Moveable Divider Rods: 56 positions on a 25mm pitch.

Fully adaptable to suit various sizes of reels.

Supplied with 30 Divider Rods.



Manufactured from high quality materials.

Full ESD compatibility.

Designed to fit the Double Sided Mobile Rack System 825-20

---

Manufactured by:

Mossman Tebbs Ltd  
20 Bentley Court  
Paterson Road  
Wellingborough  
Northants  
NN8 4BQ

Tele: +44 (0) 1933 448 000  
[www.mossmantebbs.co.uk](http://www.mossmantebbs.co.uk)  
Email: [sales@mossmantebbs.co.uk](mailto:sales@mossmantebbs.co.uk)

Designed by:

Peter Mossman

---

**Correct pcb & component storage will increase efficiency and reduce downtime.**

**Call Mossman Tebbs on +44 (0)1933 448 000**

Designed & Manufactured in Britain





# Mossman Tebbs Ltd <sup>®</sup>

20 Bentley Court  
Paterson Road  
Finedon Road Industrial Estate  
Wellingborough  
Northants NN8 4BQ

## *New Product Launch*

### Lineside Compact Double Sided Mobile Reel Rack - 825-60



Compact design with small overall footprint 960 x 700 x 1835mm

Full ESD compatibility

Clear Visual check on inventory

Mounted on high quality A/S castors

Code No. 825-60

Capacity: Up to 62 reels per double shelf - 7" and 13" Dia Reels

Fitting with 4 Double Sided Adaptable Reel Rack Shelves

Moveable Divider Rods on a 25mm pitch

Extra Divider Rods if required

Complete with Ticket Strips

---

Manufactured by:

Mossman Tebbs Ltd  
20 Bentley Court  
Paterson Road  
Wellingborough  
Northants  
NN8 4BQ

Tele: +44 (0) 1933 448 000  
[www.mossmantebbs.co.uk](http://www.mossmantebbs.co.uk)  
Email: [sales@mossmantebbs.co.uk](mailto:sales@mossmantebbs.co.uk)

Designed by:

Peter Mossman

---

**Correct pcb & component storage will increase efficiency and reduce downtime.**

**Call Mossman Tebbs on +44 (0)1933 448 000**

Designed & Manufactured in Britain





# Mossman Tebbs <sup>®</sup> Ltd

20 Bentley Court  
Paterson Road  
Finedon Road Industrial Estate  
Wellingborough  
Northants NN8 4BQ

## 29" Screen Rack - 862-120



*Two units shown, double stacked.*

Manufactured from high quality materials.

Full ESD compatibility.

Safe storage for your valuable Screens.

Footprint: 1300x830x900mm

Code No. 862-120.

Capacity: 20 Compartments.

Fitted with 4 off Fully Adjustable Articulating Feet.

Easy site loading.

Double stacking to save valuable floor space. Optional Stacking Brackets (826-127) will be required.

---

Manufactured by:

Mossman Tebbs Ltd  
20 Bentley Court  
Paterson Road  
Wellingborough  
Northants  
NN8 4BQ

Tele: +44 (0) 1933 448 000  
[www.mossmantebbs.co.uk](http://www.mossmantebbs.co.uk)  
Email: [sales@mossmantebbs.co.uk](mailto:sales@mossmantebbs.co.uk)

Designed by:  
Peter Mossman

---

**Correct pcb & component storage will increase efficiency and reduce downtime.**

**Call Mossman Tebbs on +44 (0)1933 448 000**

Designed & Manufactured in Britain





# Mossman Tebbs<sup>®</sup> Ltd

20 Bentley Court  
Paterson Road  
Finedon Road Industrial Estate  
Wellingborough  
Northants NN8 4BQ

## S M Tape Splicing Trolley - 1000-001



### Featuring:

- Basic trolley with all ESD precautions
- Platform which can be adjusted in height quickly and easily to suit operator comfort.
- 2 shelves - top shelf for hand tools and adhesive tape with scoop type edges
- Lower shelf to take empty used reels
- Can be used by RH & LH operators

Code No: 1000

A trolley to assist your operation to splice a fresh reel of components to the end of the tape of a depleting reel whilst the machine continues to place components.

This maintains the flow of production and avoiding any stop/start disruptions. This particular trolley uses the purple handle splicing tool BZ026 while it is firmly fixed to the platform of the trolley.

This allows free movement of the operation to achieve its task quickly and efficiently.

---

### Manufactured by:

Mossman Tebbs Ltd  
20 Bentley Court  
Paterson Road  
Wellingborough  
Northants  
NN8 4BQ

Tele: +44 (0) 1933 448 000  
[www.mossmantebbs.co.uk](http://www.mossmantebbs.co.uk)  
Email: [sales@mossmantebbs.co.uk](mailto:sales@mossmantebbs.co.uk)

### Designed by:

Peter Mossman

---

**Correct feeder & component storage will increase efficiency and reduce downtime.**

**Call Mossman Tebbs on +44 (0)1933 448 000**

Designed & Manufactured in Britain





# Mossman Tebbs Ltd <sup>®</sup>

20 Bentley Court  
Paterson Road  
Finedon Road Industrial Estate  
Wellingborough  
Northants NN8 4BQ

## SERVICE AND CAPACITY LIST.

**Mossman Tebbs Ltd can boast the following first class services:**

Modern Sheetmetal Fabrication company.

State of the Art Fabrication Facilities.

Stainless Steel and Aluminum Specialists.

Auto CAD Design and Development Facilities.

3 D Modeling.

**Mossman Tebbs Ltd can offer you the following first class machine capacity:**

Trumpf L3030 4kw Laser Cutting, (capacity sheet size 3000 x 1500). Lights Out.  
Trumpf TruPunch 5000 FMC CNC Punch, (capacity sheet size 2500 x 1250). Lights Out.  
Bystronic Xpert 100 CNC 6 Axis Robotic Brake Press Cell 2.5 Metre  
Bystronic Xpert 150 CNC 9 axis Brake Press Extended Daylight & Stroke. Lifting Aid. 3 Metre.  
Edwards 100 CNC 8 axis Brake Press Extended Daylight & Stroke. 3 Metre.  
Edwards 100 CNC 8 axis Brake Press Extended Daylight & Stroke. 3 Metre.  
Edwards 100 CNC 6 axis Brake Presses 1.5 Metre.  
Flow Drilling and Tapping.  
CNC Sawing and Billeting.  
CNC Rivet & Hank bush applicator (up to 16 mm).  
CNC Tube manipulation (up to 65mm round).  
CNC Guillotines.  
CNC Nutsert & PSM applicator.  
Digital benders.  
15 TIG and MIG Welding Bays.  
Stud Welding.  
Spot Welding facilities.  
Grain Master - Graining sheet metal to standard grit levels.  
Razamax Deburring.  
Stainless Steel Polishing Greising.  
Powder-coating Automatic flow-line (In House).  
Metal treatment Iron Phosphate conversion.  
Anti-Bacterial Coating Process.  
Nitrogen Generation for Laser Gasses.

**‘Your one stop shop for your entire fabrication needs’**

**For further information call +44 (0)1933 440573 at speak to our Sales Department.  
Designed & Manufactured in Britain**







# Mossman Tebbs Ltd <sup>®</sup>

20 Bentley Court  
Paterson Road  
Finedon Road Industrial Estate  
Wellingborough  
Northants NN8 4BQ

**MODERN THINKING, MODERN MACHINERY.**

As you can see from the pictures below all our machinery is up-to-date, ultra modern. After heavy investment we can offer a service that is 'second to none'. All CNC controlled, these machines are fast and efficient, but more important, produce a component that enhances your product. Give us a call and we can arrange for you to see these machines at first hand. We are proud of our facility.



**CNC Tube Bending**—Up to 65mm Round complete with 'Push Bending'.



### **Laser Cutting & Profiling**—

The possibilities are virtually endless. This 4kw machine will cut up to 20mm in Mild steel, 15mm in Stainless Steel & 10mm in Aluminium.

Just provide the dwg or dxf information and we will do the rest.



**CNC Brake Presses**—We have 4 in total, up to 3m and 8 axis.



### **Punching the modern CNC way**—

Fully automatic to cater for medium/large batch volumes. Tapping and beading now available. Cost effective punching of sheet metal sub-components.



# Mossman Tebbs<sup>®</sup> Ltd

20 Bentley Court  
Paterson Road  
Finedon Road Industrial Estate  
Wellingborough  
Northants NN8 4BQ

## Laser Profiling at Mossman Tebbs Ltd

**Benefits include:**

**Sheet size: 3000 x 1500mm**

**Sheet thickness—20mm Mild Steel; 15mm Stainless Steel & 10mm Aluminium.**



**Greater capacity in working hours—This machine is fitted with latest sheet and product handling system to provide ‘lights out’ production facilities.**

**So call our Sales Department on +44 (0)1933 448 000**

**It could be the best call you will ever make.**



# Mossman Tebbs<sup>®</sup> Ltd

20 Bentley Court  
Paterson Road  
Finedon Road Industrial Estate  
Wellingborough  
Northants NN8 4BQ

## Punching at Mossman Tebbs Ltd

**Benefits include:**

**Sheet size: 2500 x 1250mm.**

**Sheet thickness: Up to 8mm Aluminium.**

**Latest processes: Roller Beading; Roller Off-Set;  
Roller De-burring; Extrude & Tap.**



**Greater capacity in working hours: This machine is fitted with latest sheet and product handling system to provide 'lights out' production facilities.**

**So call our Sales Department on +44 (0)1933 448 000**

**It could be the best call you will ever make.**



# Mossman Tebbs<sup>®</sup> Ltd

20 Bentley Court  
Paterson Road  
Finedon Road Industrial Estate  
Wellingborough  
Northants NN8 4BQ

## Press Braking at Mossman Tebbs Ltd

**Machines include:**

**Bystronic Expert 150 CNC 9 Axis Press Brake 3m.**

**Edwards 100 CNC 8 Axis Press Brake 3m.**

**Edwards 100 CNC 6 Axis Press Brake 3m.**

**Edwards 30 CNC 6 Axis Press Brake 1.5m.**



The above machines have extended Daylight & Stroke dimensions for folding deeper sections, lifting aids and a large and varied catalogue of tooling.

**Call our Sales Department on +44 (0)1933 448 000**



# Mossman Tebbs<sup>®</sup> Ltd

20 Bentley Court  
Paterson Road  
Finedon Road Industrial Estate  
Wellingborough  
Northants NN8 4BQ

## Tube Bending at Mossman Tebbs Ltd

### Benefits include:

Capacity: Up to 60mm Diameter Stainless Steel.  
Full CNC operation.  
Typical 75mm Centre Line Bend Radius.  
Push Bending facility.  
Mandrel Bending if required.

### List Below For Standard Bending.

3/4" Dia 76.2mm CLR  
3/4" Square 76.2mm CLR  
25mm Dia 75mm CLR  
25mm Square 75mm CLR  
1/1/4" Dia 79.37mm CLR  
1/1/2" Dia 76.2mm CLR  
1/1/2" Dia 95.25mm CLR  
2" DIA 100mm CLR  
30x15 Flat Sided Oval 49.5mm CLR  
50x20mm Box Section  
(Bend Through 20mm)

### List Below For Roll Bending.

25mm Dia  
1/1/4" Dia  
1/1/2" Dia  
1/3/4" Dia



So call our Sales Department on +44 (0)1933 448 000

It could be the best call you will ever make.



# Mossman Tebbs<sup>®</sup> Ltd

20 Bentley Court  
Paterson Road  
Finedon Road Industrial Estate  
Wellingborough  
Northants NN8 4BQ

## NOTES

A series of horizontal dotted lines for writing notes.



# Mossman Tebbs<sup>®</sup> Ltd

20 Bentley Court  
Paterson Road  
Finedon Road Industrial Estate  
Wellingborough  
Northants NN8 4BQ

## NOTES

A series of horizontal dotted lines for taking notes.



# Mossman Tebbs<sup>®</sup> Ltd

20 Bentley Court  
Paterson Road  
Finedon Road Industrial Estate  
Wellingborough  
Northants NN8 4BQ

## Contact

Mossman Tebbs Ltd  
20 Bentley Court  
Paterson Road  
Finedon Road Industrial Estate  
Wellingborough  
Northants  
NN8 4BQ

